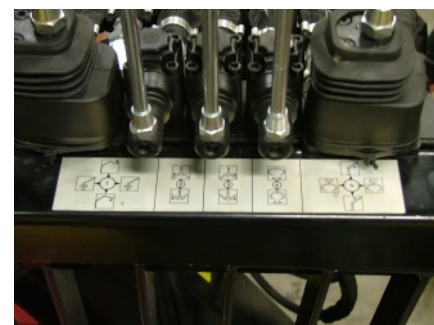


Forestry Trailer 7 tonnes

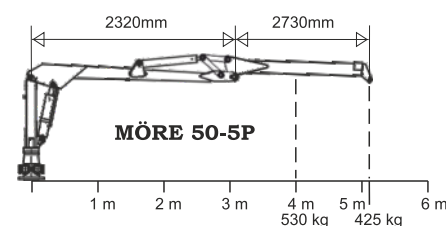
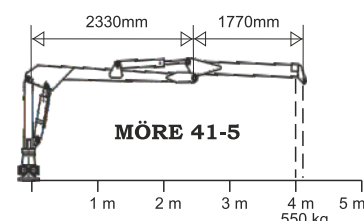


Forestry trailer 7 tonnes, centre frame, bogie wheels, hydraulic support legs, pivoted supports, tow ring for tractor



Nimble manoeuvring

Clear decals for simple handling of all functions.



Technical data bogie

	SF-7
Art. no.	04277
Load capacity tonnes	7
Width total, mm	1800
Length total, mm	5100
Bunk area, m ²	1,44
Inner length, mm	3230
Supports	4
Tow ring	yes
Articulated steering	no
Axle, mm	60x60
Wheelbase, mm	1500
Clearance, mm	460
Wheel equipment std	11,5/80x15,3
Weight, kg	900
Crane mount	Trailer

Technical data crane

	41-5	50-5P
Art. no.	04276	04354
Reach, m	4,1	5,05
Lifting capacity, kg, at 4 m	550	530
Lifting capacity, kg, at full	508	425
Reach		
Extender	no	yes
Wide angle	no	yes
Slewing cylinders std	2	2
Valve block std.	5/7XY	6/8XY
Rec. pump cap, l/min	20-30	30-50
Working pressure, bar	170	180
Turning angle, crane	370	370
Slewing, rotator	unlim.	unlim.
Grapple area m ²	0,14	0,14
Weight, kg	600	630

Complete forestry trailer

Model	Art.no	Price
SF-7/41-5 4,1m	04220	84.600:-
SF-7/50-5P 5,05m	04334	92.600:-

Accessories SF-7

Accessory	Art. no.	Price
Two-wheel brake Hydr.	04260	8.300:-
Four-wheel brake Hydr.	04219	11.950:-
Two-wheel brake Pneum.	04291	12.900:-
Four-wheel brake Pneum.	04218	17.900:-
Cross-beam with 2 extra supports	04111	3.860:-
Wheels 400x15.5	40020	additional price
		4.500:-