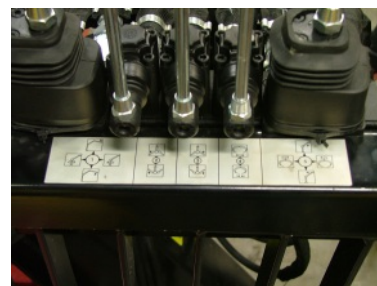
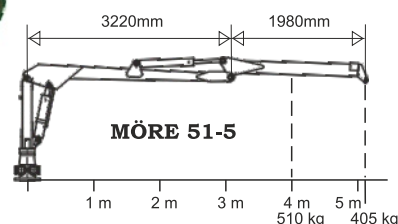


Forestry Trailer 8 ton



Nimble manoeuvring
clear decals for simple handling of all functions.

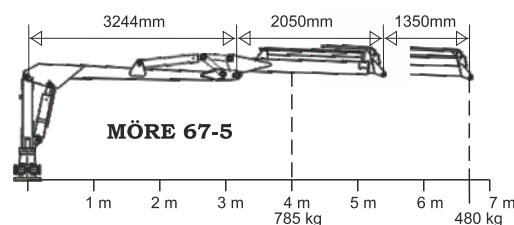
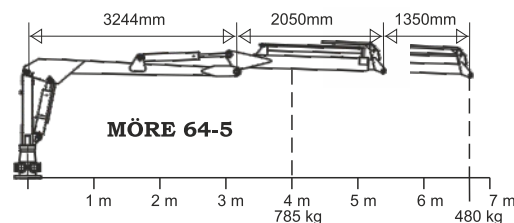
8-tonnes forestry trailer, centre frame, articulated steering, adjustable bogie, hydraulic support legs, pivoted supports, tow ring



Articulated steering provides greater mobility and longer crane reach.



Sturdy frame design with adjustable bunks equipped with lock function.



Technical data bogie	SF-8
Art.No	04034
Load capacity tonnes	8
Width total, mm	1920
Length total, mm	6150
Bunk area, m ²	1,85
Inner length, mm	4230
Supports	4
Tow ring	yes
Articulated steering	ja, 1-cyl
Axle, mm	60x60
Wheelbase, mm	1630
Clearance, mm	570
Wheel equipment std	11,5/80x15,4
Weight, kg	950
Crane mount	three-point

Technical data crane	51-5	64-5	67-5
Art no	04035	04247	04336
Reach, m	5,2	6,65	6,65
Lifting capacity, kg, at 4 m	510	785	785
Lifting capacity, kg, at full	405	480	480
Reach			
Extender	no	yes	yes
Wide angle	no	no	yes
Slewing cylinders std	2	4	4
Valve block std.	6/8XY	6/8XY	6/8XY
Rec. pump cap, l/min	30-50	30-50	30-50
Working pressure, bar	170	180	180
Turning angle, crane	370	370	370
Slewing, rotator	unlim.	unlim.	unlim.
Grapple area m2	0,18	0,18	0,18
Weight, kg	800	970	990

Complete forestry trailer	Price
SF-8/51-5 5,2m Art.no 04036	109.900:-
SF-8/64-5 with extender 6,5m Art.no 04246.	116.900:-
SF-8/67-5 with extender 6,5m Art.no 04340	119.400:-

Accessories SF-8	Price
Two-wheel brake Hydr. Art.no 04260	8.300:-
Four-wheel brake Hydr. Art.no 04219	11.950:-
Two-wheel brake Pneum. Art.no 04291	12.900:-
Four-wheel brake Pneum. Art.no 04218	17.900:-
Cross-beam with 2 extra supports Art.no 04111	3.860:-
Wheels 400x15,5 Art.no 40020 Additional price	4.500:-