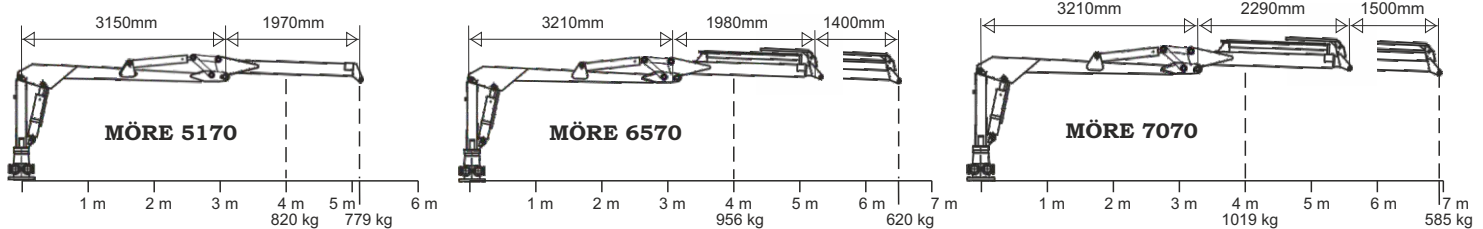


Forestry Trailer 9 tonnes



Forestry trailer 9 tonnes, sturdy double frame, articulated steering, long bunk area, bogie, telescopic support legs, quick-coupled crane, 2-lever valve block, 400x15.5/14



Complete forestry trailer

Price

SF-9/5170 5,12m Art.no 04346	123.800:-
SF-9/6570 6,5m Art.no 04321	129.600:-
SF-9/7070 7,0m Art.no 04347	139.000:-

Technical data bogie	SF-9
Art.No	04014
Load capacity tonnes	9
Width total, mm	2200
Length total, mm	5150
Bunk area, m ²	2,06
Inner length, mm	3450
Supports	6
Tow ring	yes
Articulated steering	ja, 2-cyl
Axle, mm	60x60
Wheelbase, mm	1760
Clearance, mm	570
Wheel equipment std	400x15,5/14
Weight, kg	1500
Crane mount	three point

Technical data crane	5170	6570	7070
Art.No	04330	04320	04339
Reach, m	5,12	6,5	7,0
Lifting capacity, kg, at 4 m	820	956	1019
Lifting capacity, kg, at full	779	620	585
Reach			
Extender	no	yes	yes
Wide angle	yes	yes	yes
Slewing cylinders std	2	4	4
Valve block std.	FRV60/7-T	FRV60/8-T	FRV60/8-T
Rec. pump cap, l/min	30-50	30-50	30-50
Working pressure, bar	180	180	180
Turning angle, crane	370	370	370
Slewing, rotator	unlim.	unlim.	unlim.
Grapple area m ²	0,18	0,18	0,22
Weight, kg	820	920	980

Accessories trailer (additional price)

Price

Two-wheel brake Hydr. Art.no 04029	10.450:-
Four-wheel brake Hydr. Art.no 04030	15.300:-
Four-wheel brake Pneum. Art.no 04025	22.000:-
2 extra supports Art.no 04027	3.100:-
Welding socket for extra support Art.no 04028	450:-
Wheels 500x17 Art.no 40045	12.600:-
Wheels 500x17 Traction Art.no 40119	14.200:-

Accessories crane (additional price)

Price

Valve with electric On-Off Art.no 04091	4.680:-
Valve, lightweight w. electric On-Off Art.no 04231	9.700:-
Valve, hydr. pre-control & 2 joysticks Art.no 04084	24.100:-
Valve with fully-electric joystick Art.no 04197	35.200:-
Valve, radio control Art.no 04338	62.100:-