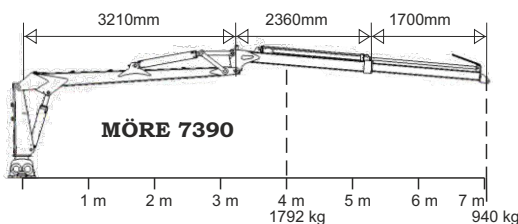
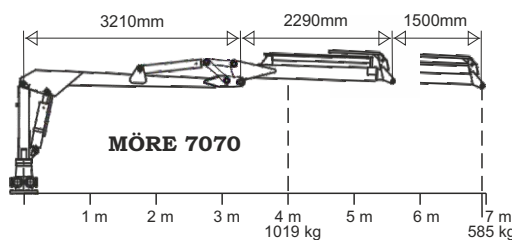
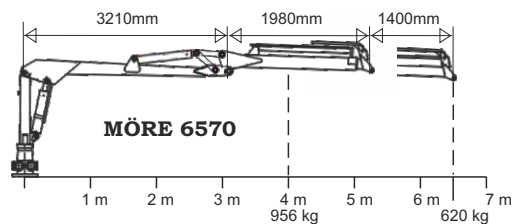


# Forestry Trailer 11 tonnes



**Forestry trailer 11 tonnes, designed for large cranes, double frame, articulated steering, bogie, telescopic support legs, quick-coupled crane, 2-lever valve block, 400x/60x15,5 14PR**

**Complete forestry trailer**

	Price
SF-11/6570 6,5m Art.no 04335	131.700:-
SF-11/7070 7,0m Art.no 04341	141.600:-
SF-11/7390 7,3m Art.no 04348	156.300:-

Technical data bogie	SF-11
Art.No	04017
Load capacity tonnes	11
Width total, mm	2200
Length total, mm	5500
Bunk area, m <sup>2</sup>	2,3
Inner length, mm	3810
Supports	6
Tow ring	yes
Articulated steering	yes, 2-cyl
Axle, mm	70x70
Wheelbase, mm	1760
Clearance, mm	570
Wheel equipment std	400x15,5/14
Weight, kg	1600
Crane mount	three point

Technical data crane	6570	7070	7390
Art.No	04320	04339	04345
Reach, m	6,5	7,0	7,3
Lifting cap. kg, at 4 m	956	1019	1792
Lifting cap. kg, at full Reach	620	585	940
Extender	yes	yes	yes
Wide angle	yes	yes	yes
Slewing cylinders std	4	4	4
Valve block std.	FRV60/8-T	FRV60/8-T	FRV60/8-T
Rec. pump cap, l/min	30-50	30-50	30-50
Working pressure, bar	180	180	180
Turning angle, crane	370	370	370
Slewing, rotator	unlim.	unlim.	unlim.
Grapple area m <sup>2</sup>	0,18	0,22	0,25
Weight, kg	920	980	1540

Accessories trailer (additional price)	Price
Two-wheel brake Hydr. Art.no 04029	10.450:-
Four-wheel brake Hydr. Art.no 04030	15.300:-
Four-wheel brake Pneum. Art.no 04025	22.000:-
2 extra supports Art.no 04027	3.100:-
Welding socket for extra support Art.no 04028	450:-
Wheels 500x17 Art.no 40045	12.600:-
Wheels 500x17 Traction Art.no 40119	14.200:-

Accessories crane (additional price)	Price
Valve with electric On-Off Art.no 04091	4.680:-
Valve, lightweight w. electric On-Off Art.no 04231	9.700:-
Valve, hydr. pre-control & 2 joysticks Art.no 04084	24.100:-
Valve with fully-electric joystick Art.no 04197	35.200:-
Valve, radio control Art.no 04338	62.100:-