

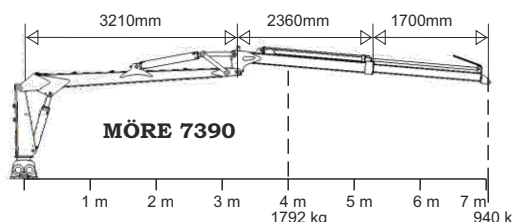
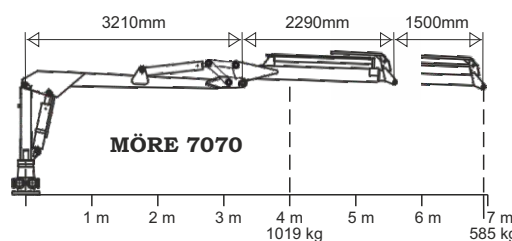
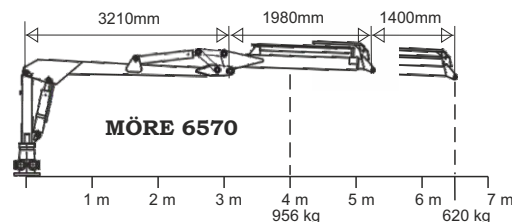
Forestry Trailer 12 tonnes

SF12/7070



These trailers are well equipped as standard: central lubrication, quick-coupled crane, hydraulic support legs, full-circle slewing rotator, grapple claw with symmetric movement pattern. Accessories: different control levers, winch, hydraulic 4-wheel drive.

Forestry trailer 12 tonnes, designed for large cranes, double frame, articulated steering, long bunk area, bogie, telescopic support legs, quick-coupled crane, 2-lever valve block, 500/50x17 18PR



Complete forestry trailer

	Price
SF-12/6570 6,5m Art.no 04349	149.400:-
SF-12/7070 7,0m Art.no 04350	158.900:-
SF-12/7390 7,3m Art.no 04351	173.600:-

Technical data bogie	SF-12
Art.No	04037
Load capacity tonnes	12
Width total, mm	2410
Length total, mm	6260
Bunk area, m ²	2,8
Inner length, mm	4470
Supports	8
Tow ring	yes
Articulated steering	yes, 2-cyl
Axle, mm	80x80
Wheelbase, mm	1960
Clearance, mm	590
Wheel equipment std	500/50x17 18PR
Weight, kg	1900
Crane mount	three point

Technical data crane	6570	7070	7390
Art.No	04320	04339	04345
Reach, m	6,5	7,0	7,3
Lifting capacity, kg, at 4 m	956	1019	1792
Lifting capacity, kg, at full	620	585	940
Reach			
Extender	yes	yes	yes
Wide angle	yes	yes	yes
Slewing cylinders std	4	4	4
Valve block std.	FRV60/8-T	FRV60/8-T	FRV60/8-T
Rec. pump cap, l/min	30-50	30-50	30-50
Working pressure, bar	180	180	180
Turning angle, crane	370	370	370
Slewing, rotator	unlim.	unlim.	unlim.
Grapple area m ²	0,18	0,22	0,25
Weight, kg	920	980	1540

Accessories trailer (additional price)	Price
Hydr. 4WD incl 500/55x17 Art.no 04139	81.200:-
Two-wheel brake Hydr. Art.no 04049	11.500:-
Four-wheel brake Hydr. Art.no 04050	16.000:-
Four-wheel brake Pneum. Art.no 04083	24.900:-
2 extra support Art.no 04027	3.100:-
Welding socket for extra support Art.no 04028	450:-
Wheels 500x17 Traction Art.no 40119	4.200:-

Accessories crane (additional price)	Price
Valve with electric On-Off Art.no 04091	4.680:-
Valve, lightweight w. electric On-Off Art.no 04231	9.700:-
Valve, hydr. pre-control & 2 joysticks Art.no 04084	24.100:-
Valve with fully-electric joystick Art.no 04197	35.200:-
Valve, radio control Art.no 04338	62.100:-