

Forestry Trailer 14 tonnes



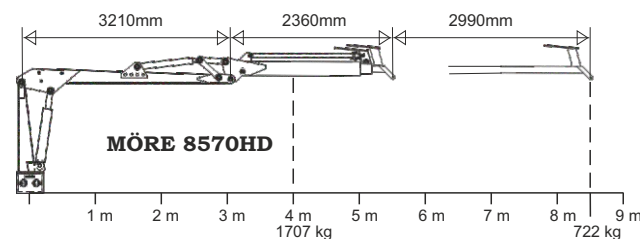
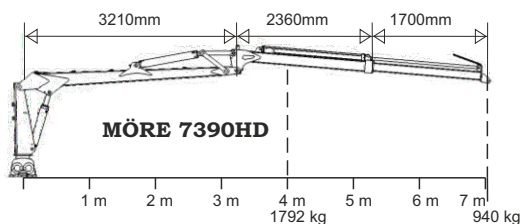
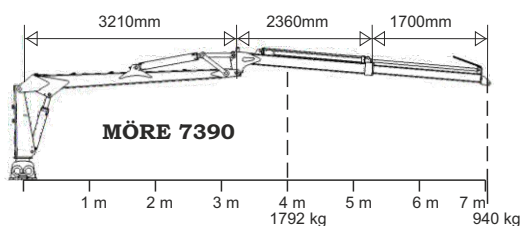
Forestry trailer 14 tonnes, designed for large cranes, double frame, articulated steering, long bunk area, bogie, quick coupled crane, 2-lever valve block, 500x45x22.5



Professional series for forestry companies as well as independent foresters. These trailers are used in several European countries in three work shifts in difficult terrain. In a short space of time, this has provided us with experience that has been incorporated in the new generation of professional trailers.

Improved mobility, increased load capacity, refined movement patterns & increased lifting capacity.

The sturdy double frame has a low build height & the tow coupling centre line is located far back. Articulated steering with two dual-acting cylinders, which provides the trailer with exceptional tracking, stability and reach. The frame has pivoted supports, which prevent damage to standing trees. At the front is a sturdy front gate and mounts for the crane and support legs.



Complete forestry trailer		Price
SF-14/7390 7,3m	Art.no 04352	201.600:-
SF-14/7390HD 7,3m	Art.no 04353	215.700:-
SF-14/8570 8,51m	Art.no 04343	219.300:-

Technical data bogie	SF-14
Art.No	04203
Load capacity tonnes	14
Width total, mm	2410
Length total, mm	6260
Bunk area, m ²	3,5
Inner length, mm	4570
Supports	8
Tow ring	yes
Articulated steering	yes, 2-cyl
Axle, mm	90x90
Wheelbase, mm	1960
Clearance, mm	590
Wheel equip. std	500/45x22,5
Weight, kg	2640
Crane mount	three point

Technical data crane	7390	7390HD	8570HD
Art.No	04345	04328	04329
Reach, m	7,3	7,3	8,51
Lifting capacity, kg, at 4 m	1792	1792	1707
Lifting capacity, kg, at full Reach	940	940	722
Extender	yes	yes	yes
Wide angle	yes	yes	yes
Slewing cylinders std	4	4	4
Valve block std.	FRV60/8-T	CRV80S/8A	CRV80S/8A
Rec. pump cap, l/min	30-50	30-50	30-50
Working pressure, bar	180	180	180
Turning angle, crane	370	370	370
Slewing, rotator	unlim.	unlim.	unlim.
Grapple area m2	0,25	0,28	0,28
Weight, kg	1540	1570	1650

Accessories trailer (additional price)	Price
Hydr. 4WD incl 550/45x22,5 Art.no 04214	103.200:-
Four-wheel brake Hydr. Art.no 04229	25.100:-
Four-wheel brake Pneum. Art.no 04230	33.800:-
2 extra support Art.no 04027	3.100:-
Welding socket for extra support Art.no 04028	450:-

Accessories crane (additional price)	Price
Valve with electric On-Off Art.no 04091	4.680:-
Valve, lightweight w. electric On-Off Art.no 04231	9.700:-
Valve, hydr. pre-control & 2 joysticks Art.no 04084	24.100:-
Valve with fully-electric joystick Art.no 04197	35.200:-
Valve, radio control Art.no 04338	62.100:-