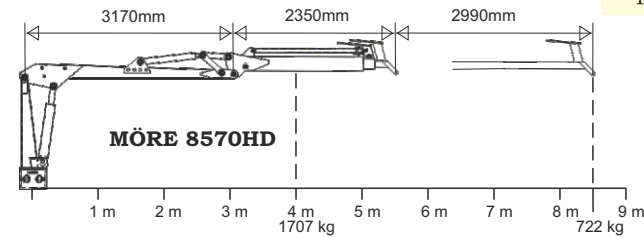
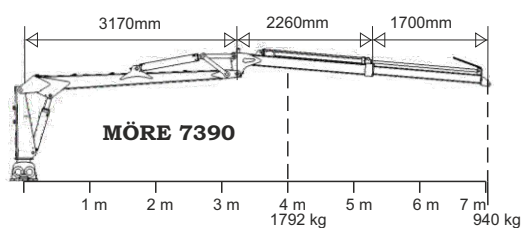
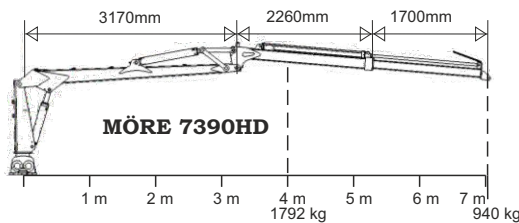
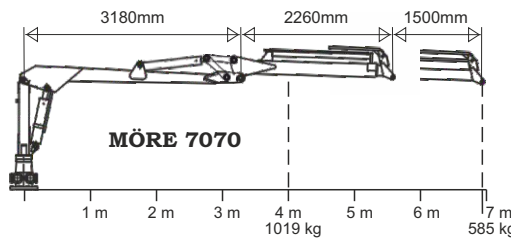
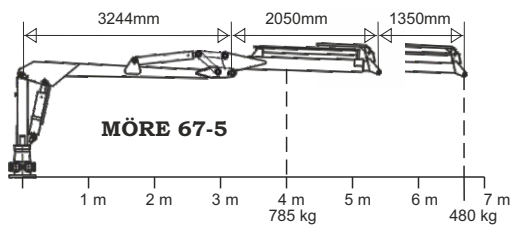
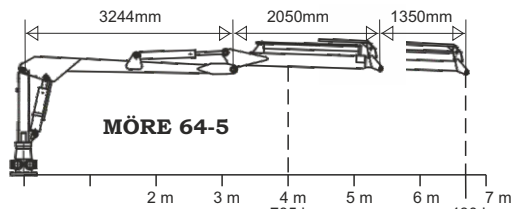
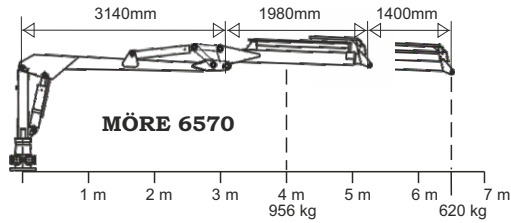


Grapple Loaders over 6 m



Accessories crane (additional price)	Price
Valve with electric on-off Art.no. 04091	4.680:-
Valve, lightweight w. electric On-Off Art.no 04231	9.700:-
Valve, hydr. pre-control & 2 joysticks Art.no 04084	24.100:-
Valve with fully-electric joystick Art.no 04197	35.200:-

The lifting capacity of the new Möre Grapple generation has been thoroughly tested and this has shown that the maximum lifting capacity has increased by as much as 30%! The tests were conducted at 4 m/full reach, using a rotator without a grapple claw attached.

The grapple claw weight varies depending on the customer's choice of size and as such is excluded.

The Möre Grapple is equipped as standard with hydraulic telescopic support legs. The larger 68-5, 70-5 and 8570 models are equipped with butterfly-type hydraulic support legs.

Model	6570	64-5	67-5	7070	7390	7390HD	8570HD
Art.no.	04320	04247	04336	04339	04345	04328	04329
Reach, m	6,5	6,65	6,65	7,0	7,3	7,3	8,51
Lifting capacity, kg, at 4 m	956	785	785	1019	1792	1792	1707
Lifting capacity, kg, at full reach	620	480	480	585	940	940	722
Extender	yes	yes	yes	yes	yes	yes	yes
Wide angle	yes	no	yes	yes	yes	yes	yes
Slewing cylinders, std	4	4	4	4	4	4	4
Valve block, std	FRV60/8-T	6/8XY	6/8XY	FRV60/8-T	FRV60/8-T	CRV80S/8A	CRV80S/8A
Rec. pump capacity, l/min	30-50	30-50	30-50	30-50	30-50	30-50	30-50
Working pressure, bar	180	180	180	180	180	180	180
Turning angle, crane	370	370	370	370	370	370	370
Slewing, rotator	unlim.	unlim.	unlim.	unlim.	unlim.	unlim.	unlim.
Grapple area, m2	0,18	0,18	0,18	0,22	0,25	0,28	0,28
Weight, kg	920	970	990	980	1540	1570	1650
Price	83.500:-	80.300:-	83.000:-	92.900:-	107.600:-	121.700:-	125.400:-